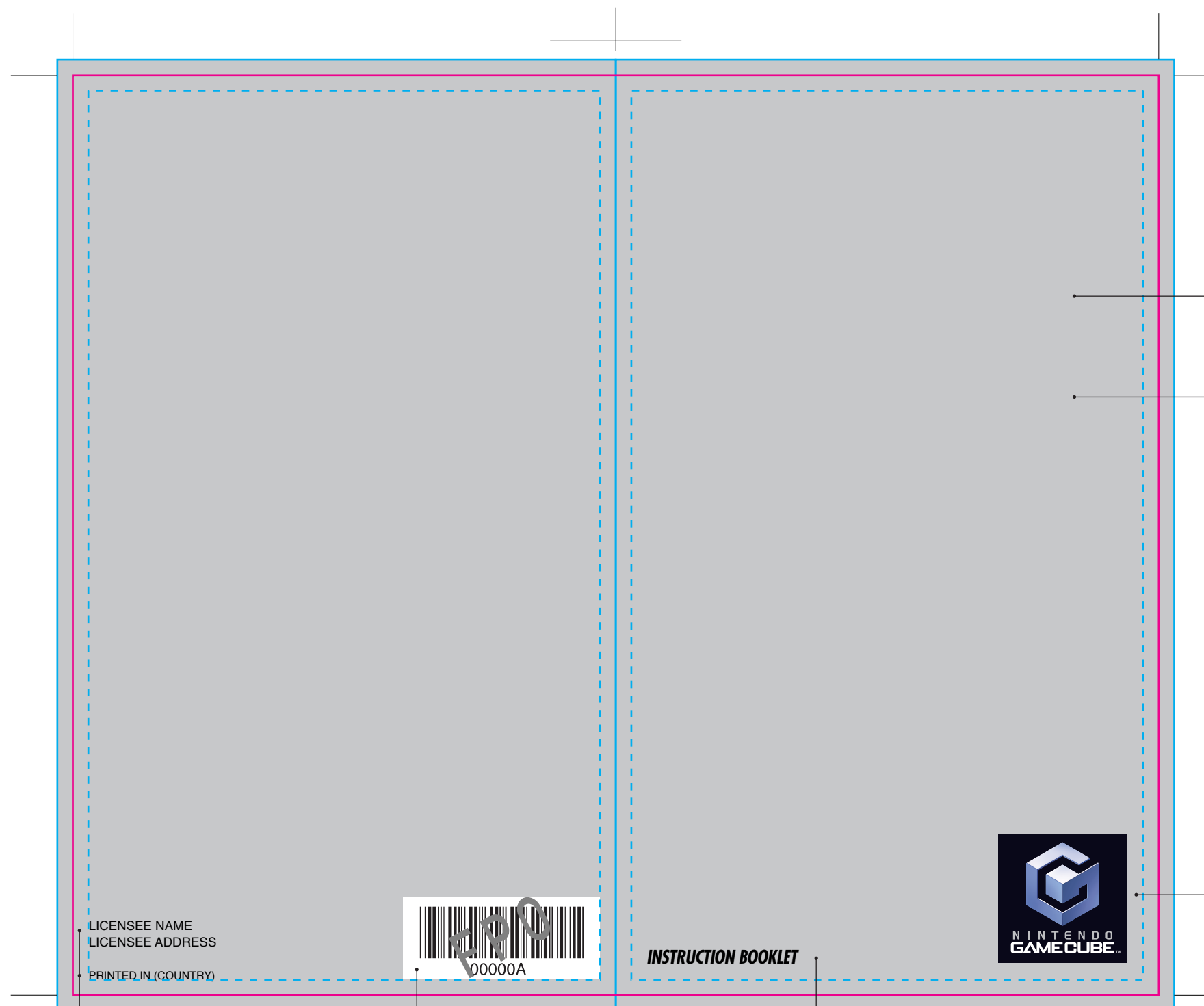


Black keylines are for position only (fpo). Do not print.

The inner dashed cyan lines indicate the minimum text-to-edge boundary. Do not print. This is 3mm inside all trim lines. Keep text, icons and all other layout items within the dashed lines.

Magenta lines indicate trim line. Do not print.

Booklet Dimensions:  
Page Width: 105 mm  
Page Height: 178 mm



• Licensee name (logo format) and game title must appear on front cover. Illustration or background color is optional as long as text is legible.

• Front cover illustration image or background color bleeds off 3mm to right side, top and bottom.

• Nintendo GameCube stacked logo, sized to 25mm x 25mm.

LICENSEE NAME  
LICENSEE ADDRESS  
PRINTED IN (COUNTRY)



INSTRUCTION BOOKLET



• "Licensee Name", "Licensee Address" and "Printed in (country)" size and location. Text prints in black or white, whichever is most legible on background color chosen.

• See Nintendo document "DOL-62-0073-001", (DOL Game Pak Printed Material Specification, Instruction Booklet), for barcode specifications. Barcode must be changed when artwork is revised. Barcode and white box not required for licensee bulk pack out.

• "Instruction Booklet" size and location. Prints in black or white, whichever is most legible on background color chosen.

OUTSIDE BACK COVER

OUTSIDE FRONT COVER