

1-2-Switch™ Champion Trophy

This paper trophy is a great way to celebrate the MVP at your next 1-2-Switch party. The instructions can get a little complicated, so ask a grown-up for help if you need it!

Materials needed:

Paper (for best results, use heavy paper like cardstock)
Glue stick and/or tape
Scissors*

Step 1: Form the base

Cut out Piece A along the dotted lines, including the small square. With the color side face down, fold forward along the solid lines. Paste the tabs together to form the base, leaving the open square on top (see diagram).

Step 2: Form the column

Cut out Piece B along the dotted lines, then fold the four larger sections forward along the solid lines to form a column with four sides. Paste the tab marked B to secure the shape. Next, fold forward the tabs along the sides of the square, then paste the middle tab to the inside of the column. Fold the two longer tabs forward to form flaps, then tuck in the flaps as shown. Finally, fold backward the four small tabs at the bottom, then leave them open (see diagram).

Step 3: Attach column to base

Slide the column into the open square on the base, then paste the four small tabs to the back of the top of the base. Fold down the top of the base with column attached and paste to the tabs.

Step 4: Form the cup

Cut out Piece C along the dotted lines, then cut four slits where indicated. (Make sure you cut the slits before assembling the cup!) Fold forward along the solid lines to form the cup, then paste tabs to the inside of the cup.

Step 5: Attach cup to column

Slide the two flaps on the column into the slits on the bottom of the cup. Make sure the side of the cup with the two slits is facing the same direction as the front of the base (with CHAMPION on it).

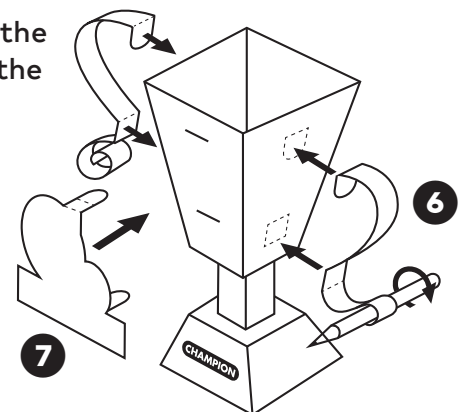
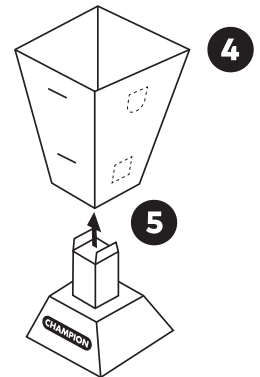
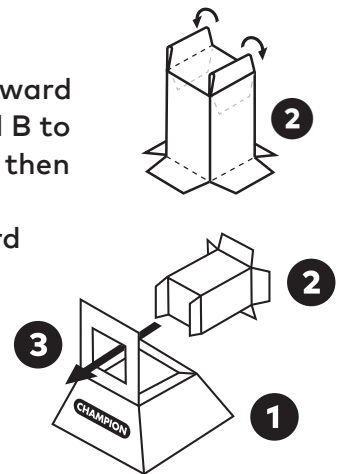
Step 6: Attach handles to cup

Cut out Piece D and Piece E along the dotted lines, then fold along the solid lines (see diagram). Paste Piece D and Piece E to the sides of the cup as shown. Use a pencil to create curls.

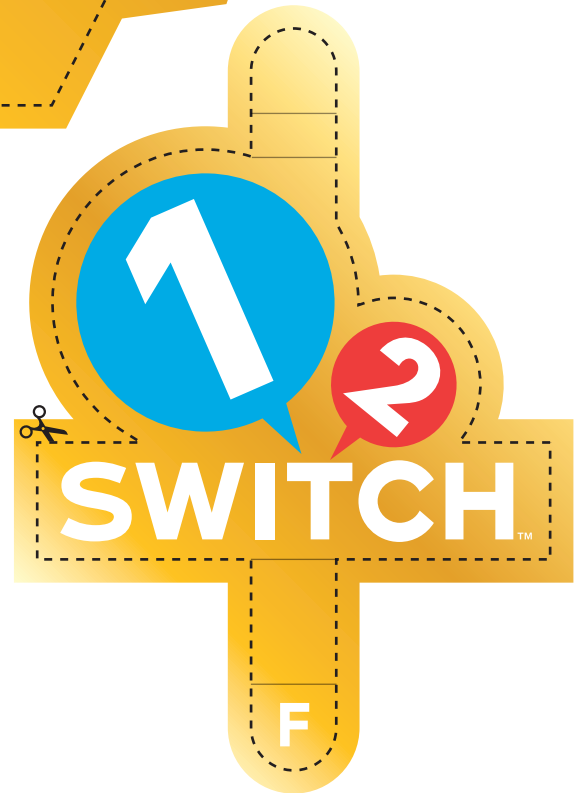
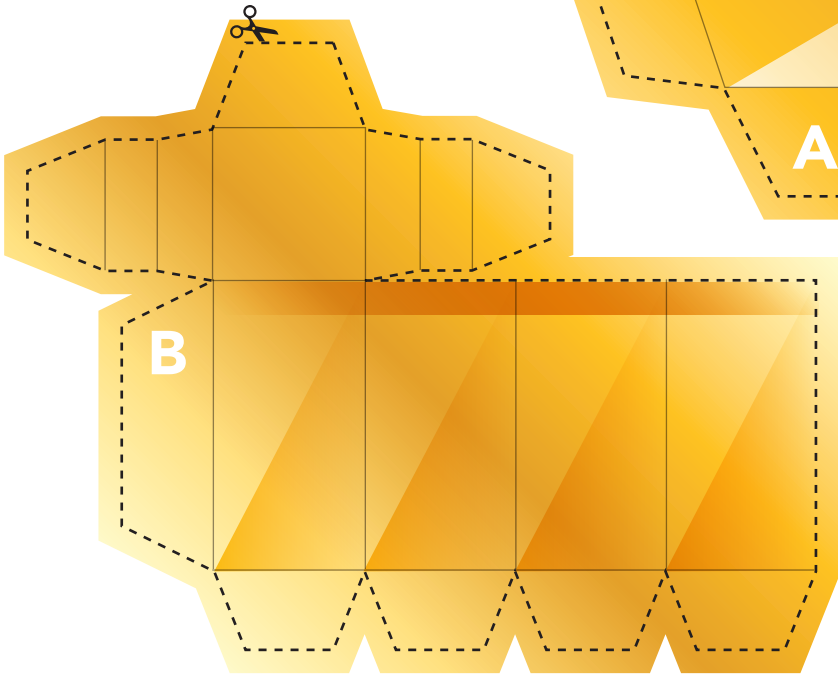
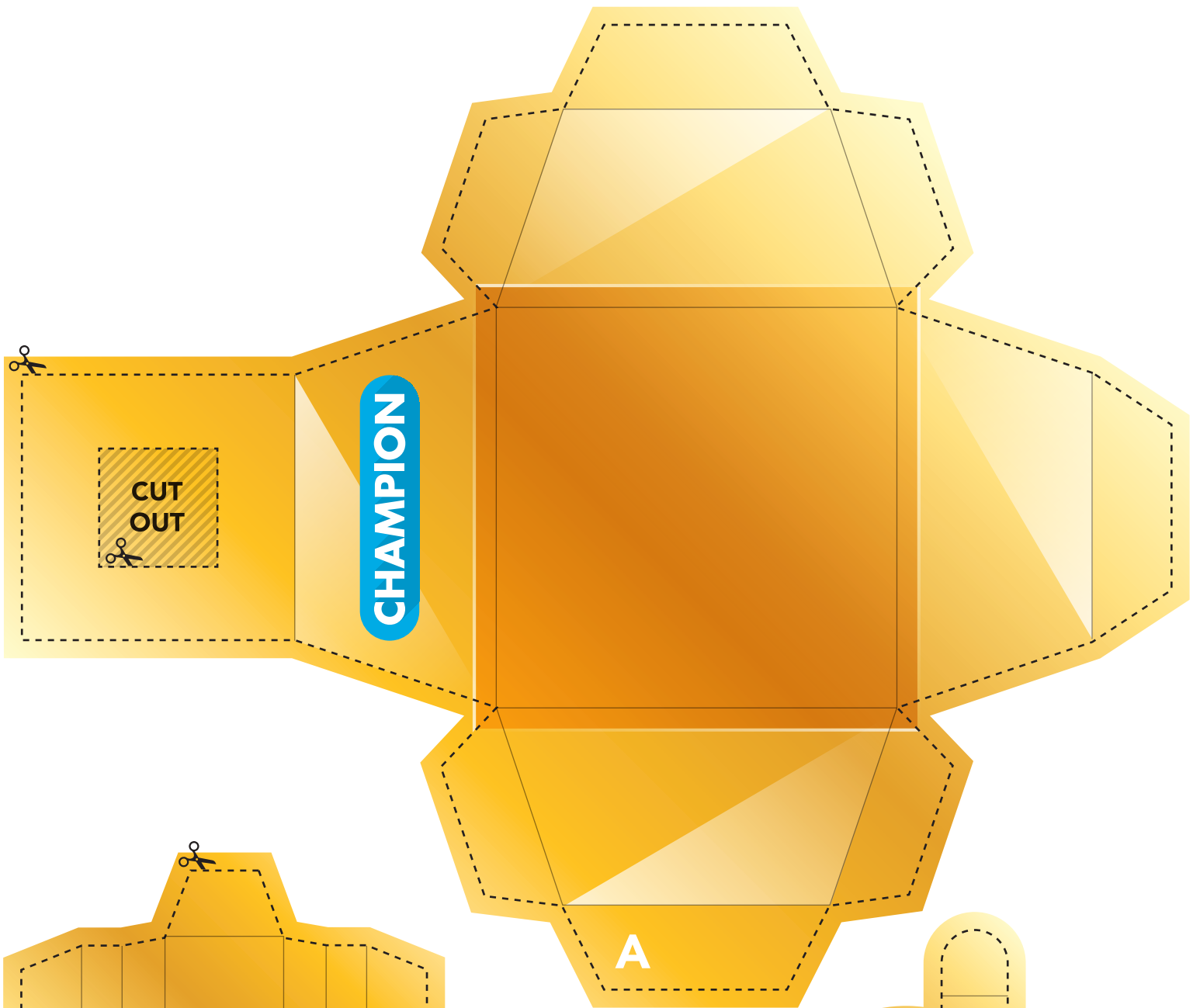
Step 7: Attach 1-2-Switch logo

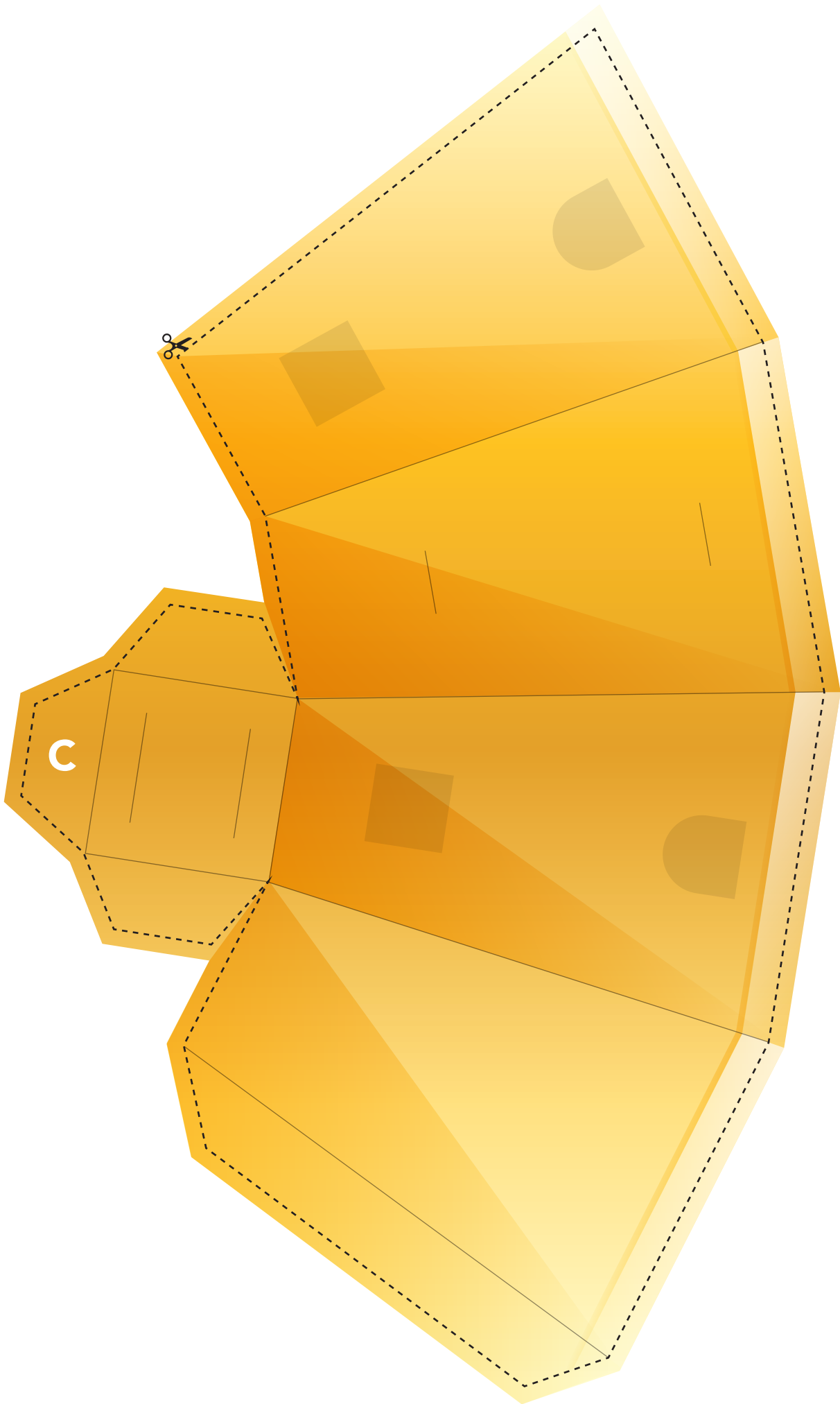
Cut out Piece F along the dotted lines, then fold forward along the solid lines. Slide the tabs into the slots on the front of the cup to create a 3D logo.

Nice job—you totally deserve a trophy for that!



*Kids, ask a grown-up to help you with scissors.





PLAY
NINTENDO

play.nintendo.com