

Instructions:

Kids, ask a grown up for help!

STEP 1 Cut the Front and Back sections along the dotted lines.

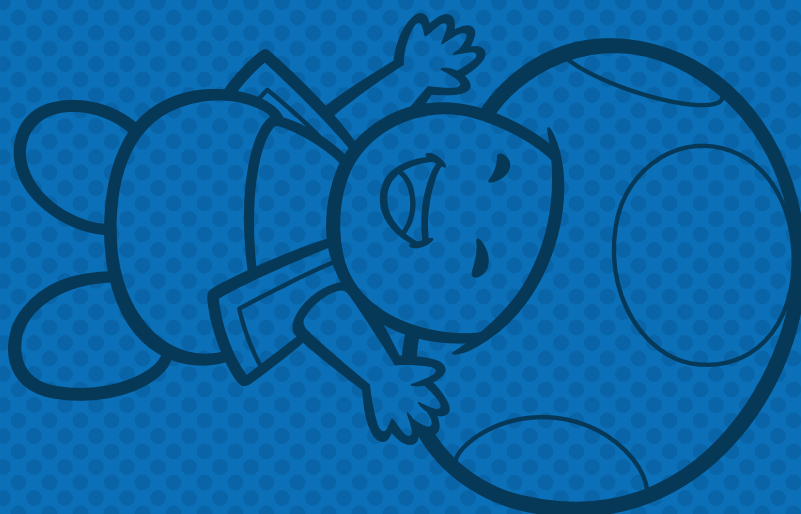
STEP 2 Fold the tabs on the Back section along the solid lines.

STEP 3 Paste the Front to the tabs on the Back.

STEP 4 On the front, write your name in the bottom space provided, to personalize your envelope.

STEP 5 If you're feeling especially creative, punch out holes on the Back and add string.

STEP 6 Then, hang your envelope on your desk, your door...wherever you collect Valentines!



To learn more you can visit
mario.nintendo.com and play.nintendo.com